

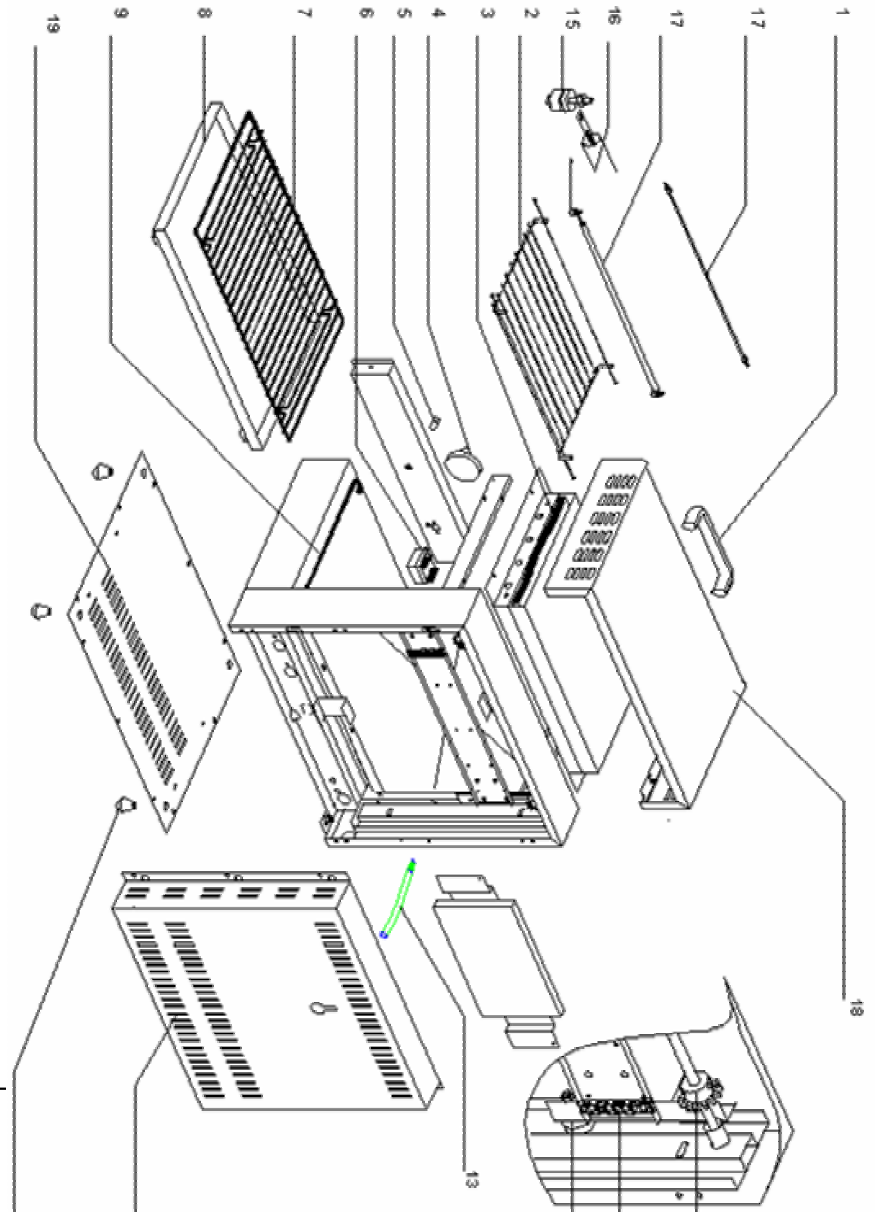
06/2006

Mod:SA/60E

Production code:SEM 600 B



Rep	Code	Qty	Pièce	Spare part
1	A15018	1	Poignée	Handle
2	F01006	1	Grille protège tube	Tube protection grid
3	H02026	2	Isolant	Insulation
4	A14078	1	Bouton	Knob
5	A08005	1	Voyant rouge	Red pilot light
6	A01001	1	Commutateur	Commutator
7	F01054	1	Grille	Grid
8	70007SE	1	Plat	Tray
9	F02007	2	Glissière plat	Tray slide
10	B01002	4	Pignon	Gear w heel
11	B07007	2	Chaîne	Chain
12	B06017	4	Roulement	Ball bearing
13	C01015	1	Cable	Cord
14	A17006	4	Pied	Foot
15	A09003	8	Steatite complète	Steatite
16	D04007	4	Tube quartz	Quartz tube
17	D01032	4	Résistance	Heating element
	D02108	4	Résistance blindée	Armoured heating element
18	70042	1	Toit	Roof
19	70006	1	Fond de socle	Bottom casing
20	70088	1	Fond arrière	Back casing



INSTRUCTION FOR USE AND INSTALLATION SEM 60

Description of the appliance

The Salamander SEM 60 allow thanks to the large infrared radiation given by the heating elements to reheat or cooked au gratin all your disks.

The moveable top allow a various cooking like you want to get it.

The free movement of the top enables the use of dishes of all sizes to grill toast.

Brown food...without pre-heating

The appliance is for professional use and must therefore be used by qualified personnel. It must be installed in accordance with current regulations.

The identification plate is located on the back of the appliance.

Dimensions and capacity

Appliance	Power Dimensions	Number of heating element	Current Input		
			Phase 1 Weight	Phase 2 Dimension of the cooking area	Phase 3
SEM 60	600 x 400 x 505	4	30 Kg	600 x 350	
SEM 60	2,8 KW	4	13 A		

Technical Data

Equipment:

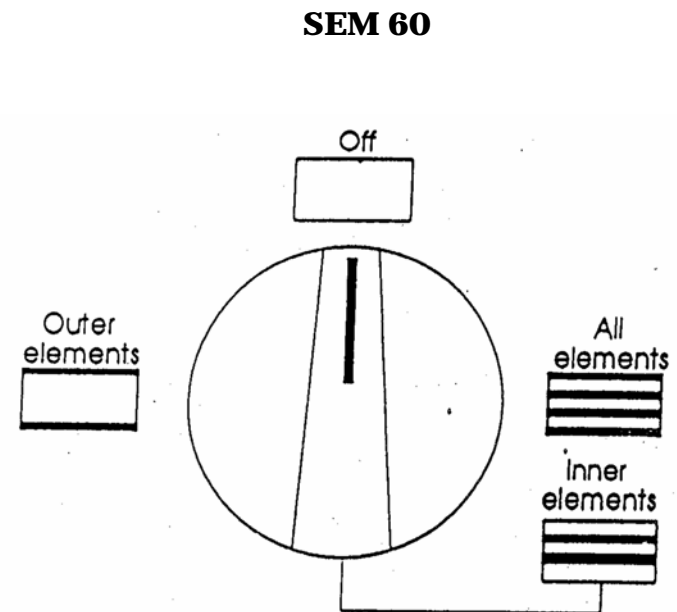
SEM 60: - Moveable top adjustable to the millimetre

- Removable crumb collector + shelf
- 1 power selector switch

Optional: - Wall mounting

Operation

Cooking using infrared radiation needs no pre-heating. You can set the power following the diagram bellow:



Cleaning

Before starting to clean, allow your appliance to cool room temperature.

Clean your appliance daily with non abrasive sponge and a little washing-up liquid.

Never clean your appliance under running water, water entering the system might affect its operation.

To remove the shelf for cleaning, pull it out as far as possible , press gently on the base of the appliance and pull again.

Installation

For MODEL SEM 60, remove the locking screw on the top, located at the back of the appliance.

NB: As cooking is carried out by radiation, the front and the sides of the appliance reach a high temperature. Consequently, it is important that the appliance is never near a wall nor on a surface made of combustible material, otherwise they should be covered with effective insulating material.

A distance of 30 cm from the partition is judged sufficient.

Electrical connection

Electrical connection must be carried out by qualified persons. Check, before connecting, the voltage and contact rating for your mains supply.

The salamander may be connected in 220-240V single phase (appliance fitted with 3-core cable)

